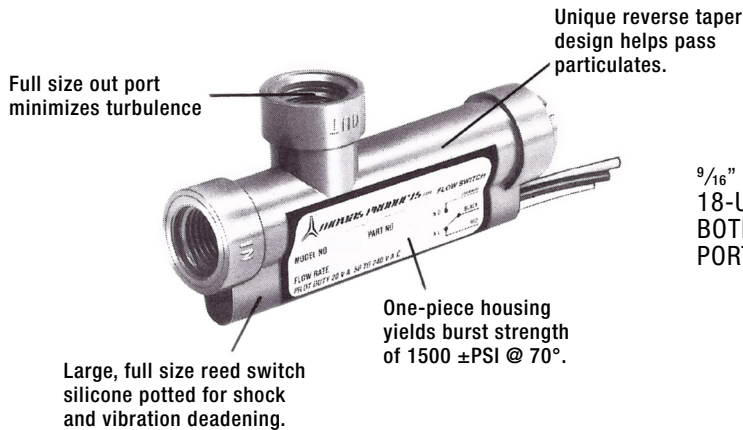


# 2100 & 2200

Please turn to our *Company Profile* and *Level Switch Selection Guide* to learn more of the advantages in specifying *Thomas Products Ltd.*® sensors.

## FIXED SET POINTS, 9/16" - 18" UNF-2B, PLASTIC

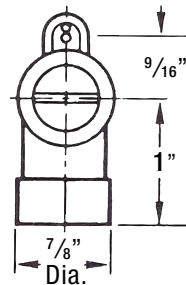
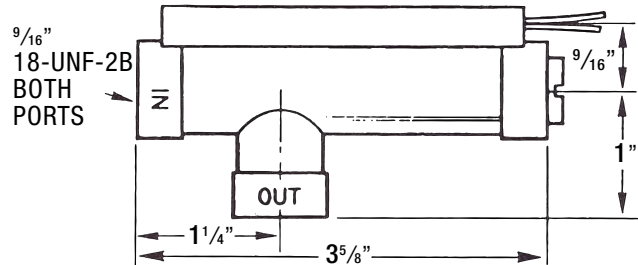
### MODEL 2100 UL



#### Applications:

- Plastic configuration throughout.
- Rugged yet economical flow switch for monitoring liquid flow or no flow conditions.
- FDA Approved Polysulfone
- UL File No. E86797

#### Dimensional Data: Model 2100 & 2200



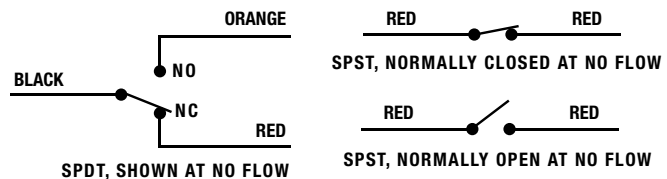
#### Specifications:

Housing	Piston	Spring	"O" Ring	Reed Switch	Wire	Oper. Temp.	Oper. Pres.	Set Pt. Accur.	Set Pt. Diff.
Polysulfone		316 SST	Viton "A"	20 Watt SPDT 15 Watt SPST See Note 6	18 AWG 24" Lg. Polymeric See Note 5	-20°F to +225°F	250 PSIG @ 70°F Max. See Note 7	15% MAX.	20% MAX.

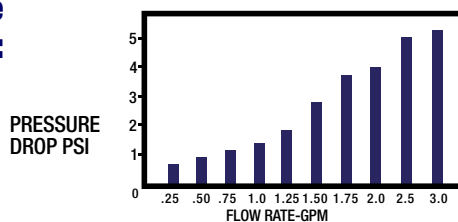
#### Part No.

SIZE PORT	FLOW SETTING GPM <i>See Note 1,2,8,9</i>	P/N N.O. SPST SWITCH	P/N N.C. SPST SWITCH	P/N SPDT SWITCH
9/16" - 18	.1	12686	12695	12704
	.25	12687	12696	12705
	.5	12688	12697	12706
	.75	12689	12698	12707
	1	12690	12699	12708
	1.5	12691	12700	12709

#### Electrical: Reed switch shown in NO FLOW condition.



#### Pressure Drop $\Delta p$ :

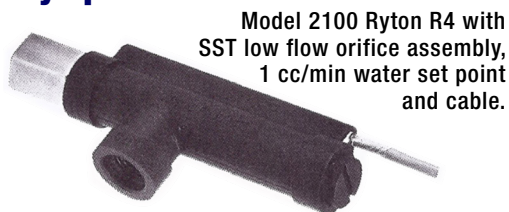


#### Switch Ratings... Max Resistive Load

V.A.	VOLTS	AMPS DC	AMPS AC	AMPS AC MAX
20	0-50	.4	.4	1.0
	120	.15	.16	
	240	.06	.08	

Switch Rating 20 VA: 50-240 VAC Pilot Duty

#### Specialty Options



Model 2100 Modified for straight-thru flow and two 1/4" NPT adapters.

