

4200 SINGLE LEVEL

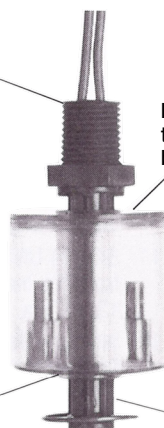
PLASTIC STEM

Plastic 1/8" NPT

Unique assembly procedure eliminates stress by actually suspending the reed switch allowing for thermal expansion and contraction.

Beverage control food contact.
Made of FDA approved material.

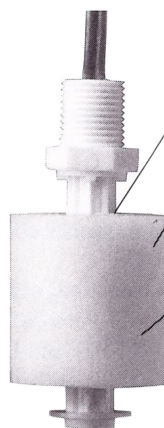
Anti-meniscus projections mean float cannot dry in place after lengthy machine shut downs.



P/N 24251

Internal lettering to help prevent bacterial growth.

Fluted stem to prevent lime deposits.



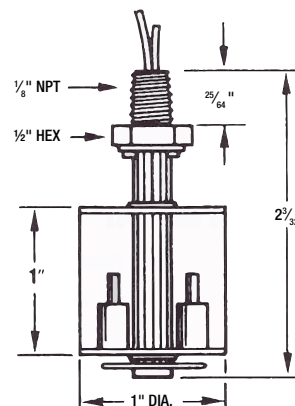
P/N 42654

Fluted stem to prevent lime deposits.

Magnets are heat-sealed in place using pure polypropylene welding rods, not epoxy.

Molded in-house. We can certify that our polypropylene floats use only virgin material, runners are not reintroduced, nor have blow agents or color concentrates been added during processing.

DIMENSIONAL DATA:



Specifications:

P/N	Mounting	Stem	Float	Switch	Lead Wires	Operating Temp.	Operating Pressure
24251	1/8" NPT.	Poly-sulfone	Poly-sulfone See Note 3	20VA SPST Note 2	22 AWG PVC 24" Long See Note 1	-40°F to +225°F	75 PSIG Max.
42654		Poly-propylene	Poly-propylene See Note 4				100 PSIG Max.

All Model 4200 level switches depicted are available with cable. All specifications are the same except for operating temperatures of -40°F to +176°F. Determine length of cable required and contact factory sales department for pricing. See Note 7.

When extending a level switch deep into a tank, configuration shown can mount, confine and protect the lead wires.

Plastic 3/8" -16 Bulkhead

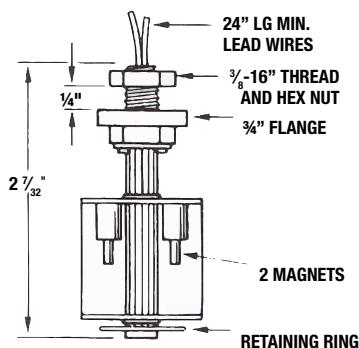
Unique assembly procedure eliminates stress by actually suspending the reed switch allowing for thermal expansion and contraction.

Magnets hermetically sealed from the inside of the float means no polling is exposed to the media.



P/N 24252

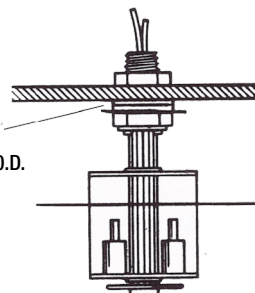
DIMENSIONAL DATA:



Specifications:

P/N	Mounting	Stem	Float	Switch	Lead Wires	Operating Temp.	Operating Pressure
24252	3/8" - 16 Bulkhead With Nut * Gasket P/N 3488 See Dwg 1.0	Poly-sulfone	Poly-sulfone See Note 3	20VA SPST See Note 2	22 AWG PVC 24" Long See Note 1	-40°F to +225°F	75 PSIG Max.

Optional silicone gasket P/N 3488. 1/16" thick 3/4" O.D. 40 durometer.



Drawing 1.0